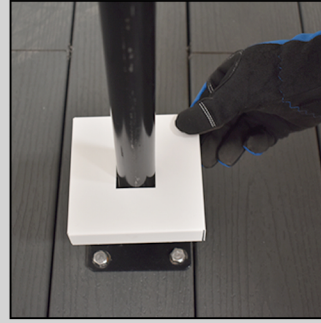




Step 1:
Attach the base post to the ground. Space between the bases need to be 72 1/2" for 6' slats. If you use special size slats, add 1/2" to the slat size.



Step 2:
Level all the post base from all size.



Step 3 (optional):
Place the base cover before inserting the aluminum post.



Step 4:
Slide the aluminum post on the post base. Make sure the slat's opening on the post is to the fence directions.



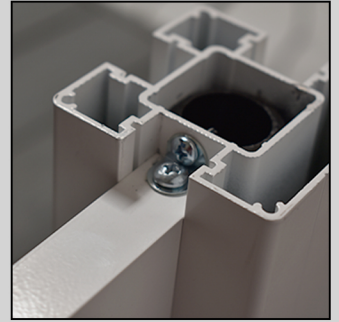
Step 5:
Slide the slat between the post and slide both side on the same time. Two people are recommended for this step.



Step 6:
Slide the spacers you need into both post all the way down to the slat.



Step 7:
Keep sliding the slats and spacers (step 5 and 6). Make sure to leave minimum 1/2" from the last slat to the end of the post (for the post cap).



Step 8:
Using L brackets and self drilling screws, secure the last slat to the post.



Step 9:
Place the last spacer to flush with the end of the post. You can use more than one spacer or cut the right size.



Step 10:
After sliding all slats from 2 sides of the post, use self drilling screws to secure the aluminum post to the base. 2 screws are recommended.



Step 11:
Use the post cover (same size as the post) to cover the screws.



Step 12:
Place the cap and you are all done!

